

The logo for Universal Systems Group (USG) features the letters "USG" in a large, bold, blue, sans-serif font.

UNIVERSAL
SYSTEMS
GROUP



MANUFACTURER
STEEL STRUCTURE PREFABRICATED CONSTRUCTION

CERTIFICATE



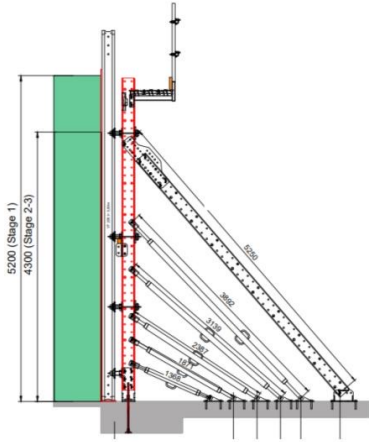
ISO9001 ISO3834 EN1090 ISO14001 CPIC



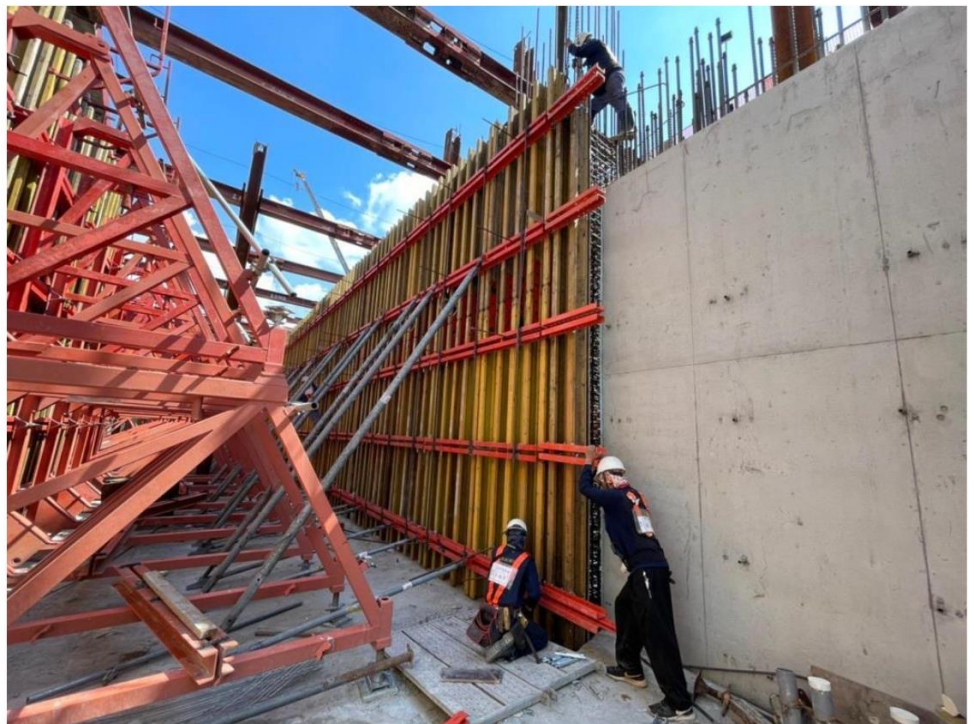
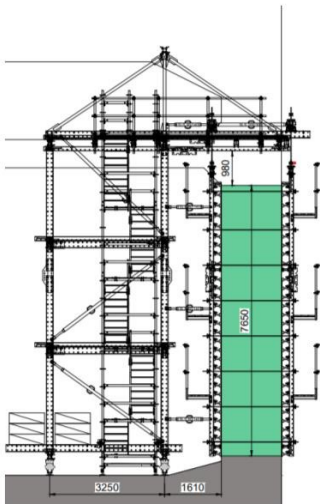
OUR **PROJECT-SPECIFIC** PRODUCTS FOR TUNNEL

Formwork System

SINGLE-SIDED WALL FORMWORK

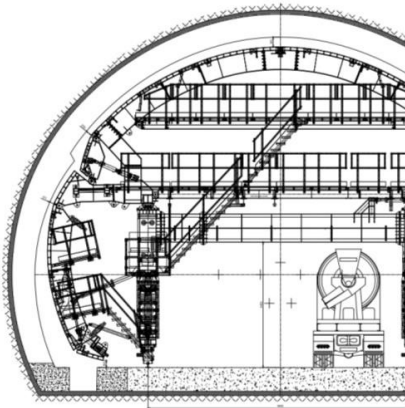


FORMWORK TRAVELERS

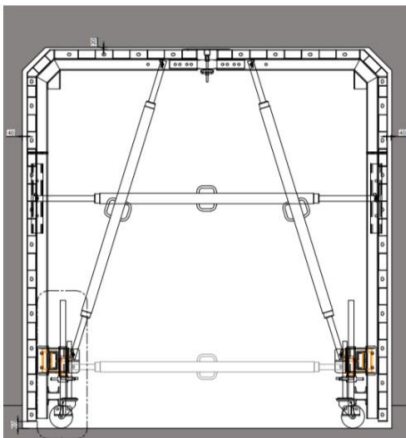


Formwork System

SPECIAL STEEL FORMWORK

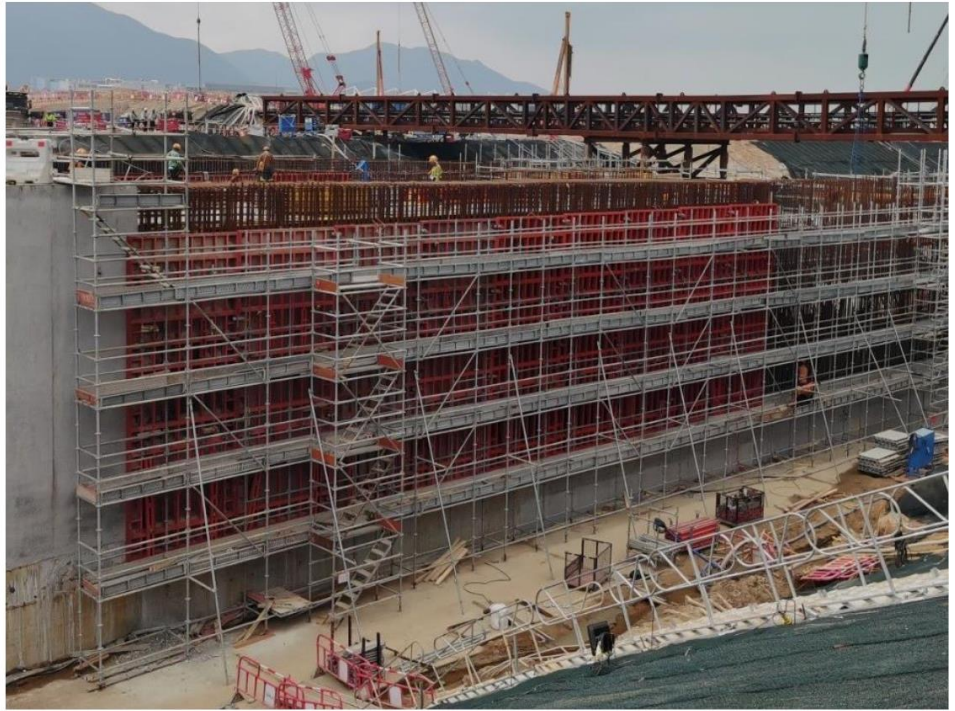
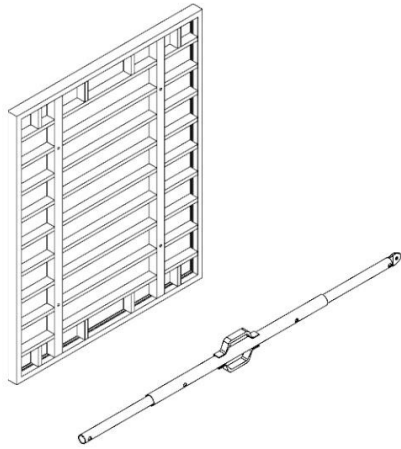


BOX CULVERT

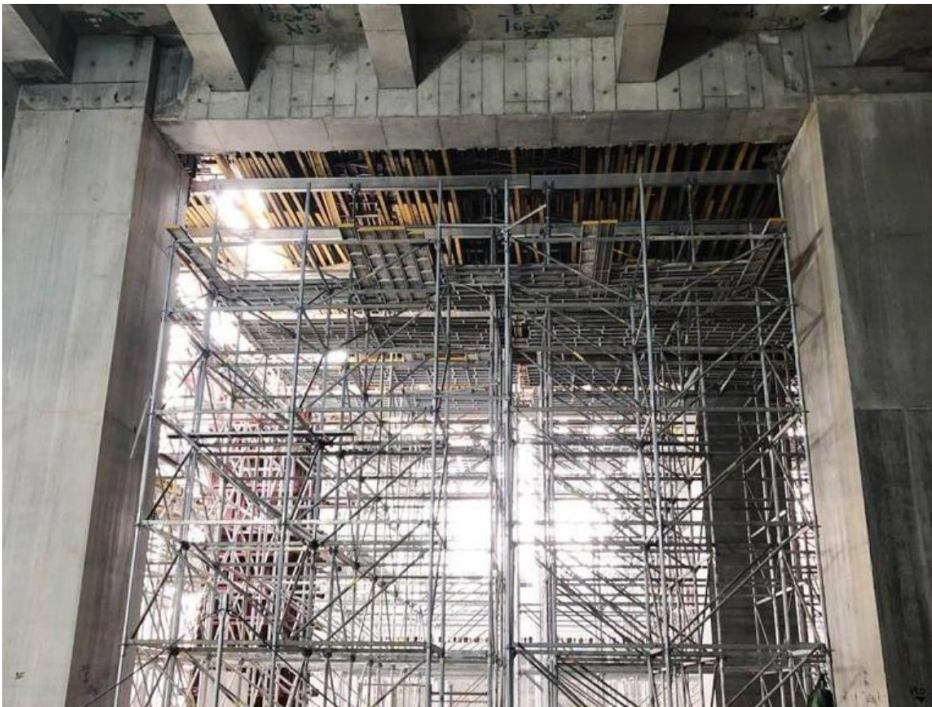


Formwork System

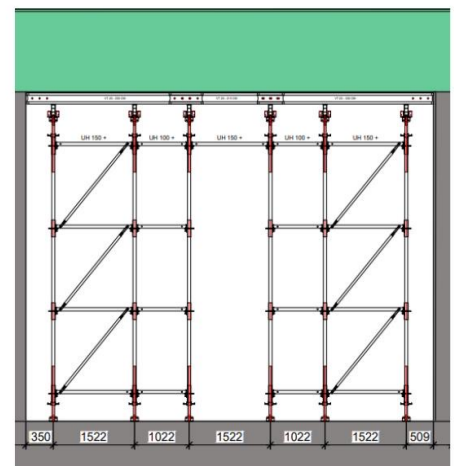
FORMWORK PANELS & PROPS



Scaffolding Solution



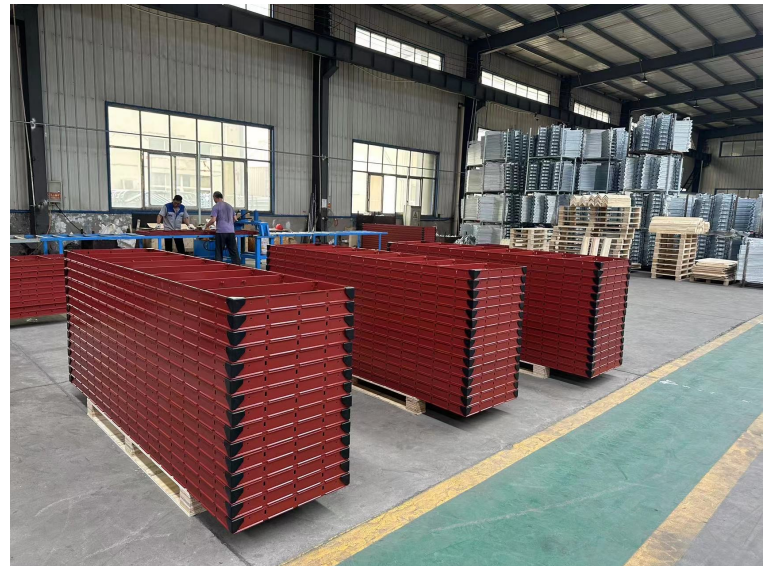
TOP SLAB SHORING



Formwork System

Steel Panels

Aluminum Panels



Formwork System Accessories

Swivel Wing Nut



Hex Coupler / Steel Hex Nut / Windmill Series Nut



Clamps

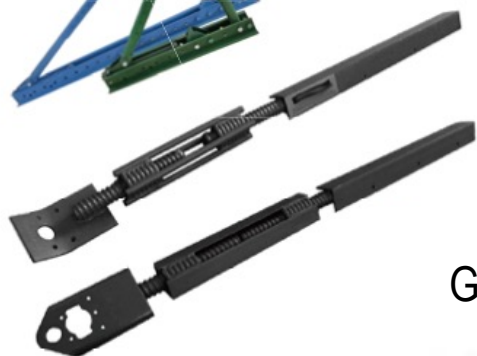


Formwork System Accessories

Bridge Overhang Bracket



Turnbuckle Form Aligner



Gang Form Bolt



CBracket



ABracket



Z – Tie Holder and Waler Tie



Wedge Bolt



Scaffold Jack



One Piece Waler Bracket
(S Liner BKT)



Double Waler Bracket



Sure – Lock Bracket



Steel Tie Holder



Formwork System Accessories

Aluminum Tie



Base Tie



Standard Loop Tie



Footing Tie



Spreader Cleats



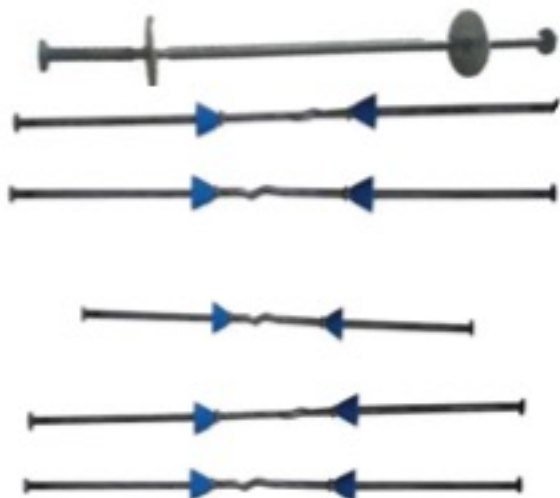
Flat Tie



Corner lock



Snap Ties



Round Head Pin



Flat Wedge



Sure-Lock Strongback
Clamp



Curve Wedge



Latch

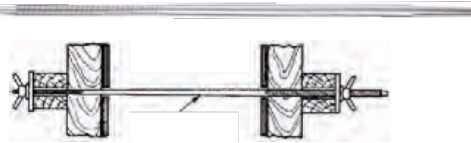


4x4 Post Shore Clamp

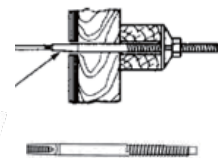


Formwork System Accessories

Taper Ties



She-Bolt



D/R Thread Bar



Coli Anchor



Coli Bolts

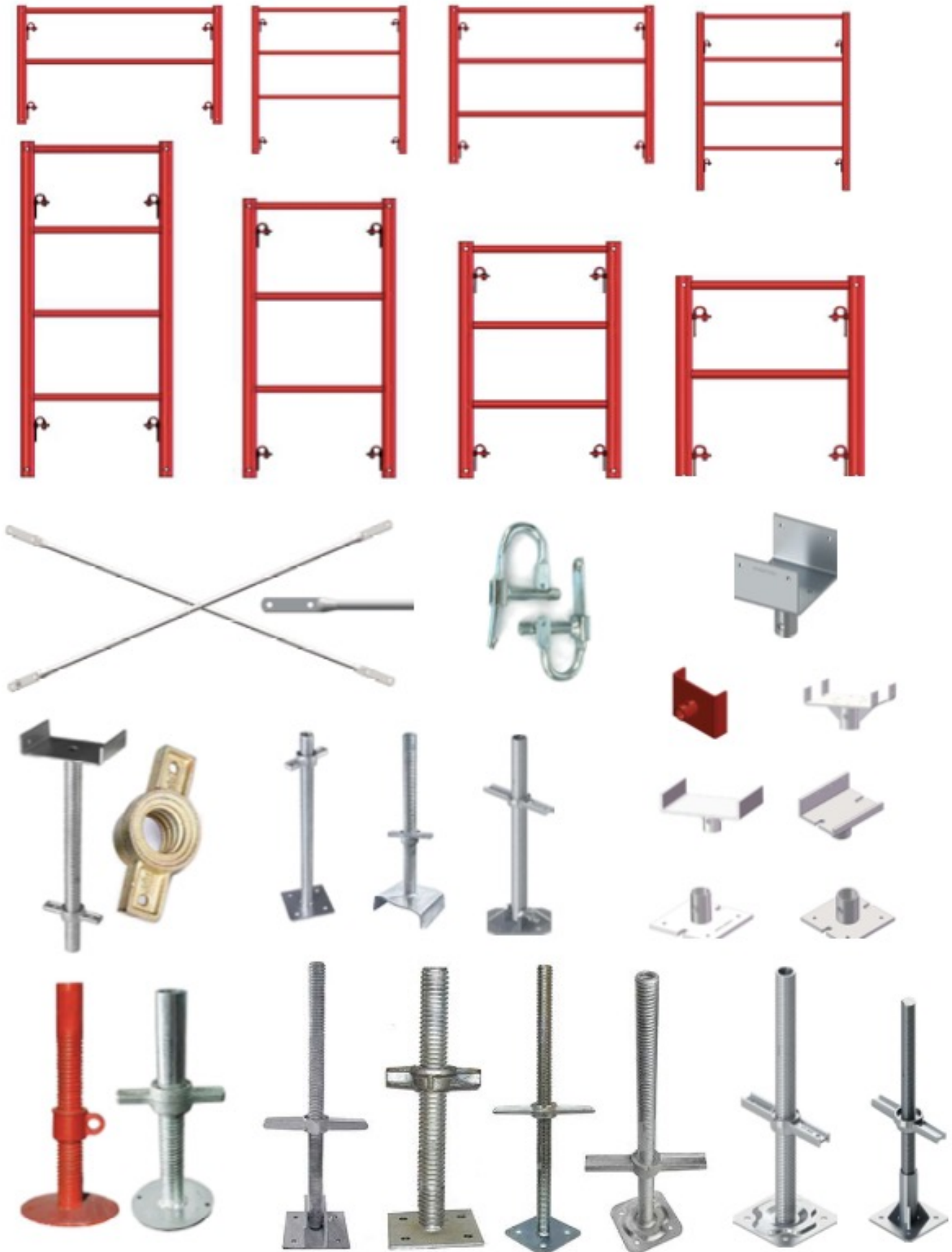


Coli Rods



Shoring and Scaffolding System

Shoring



Shoring and Scaffolding System

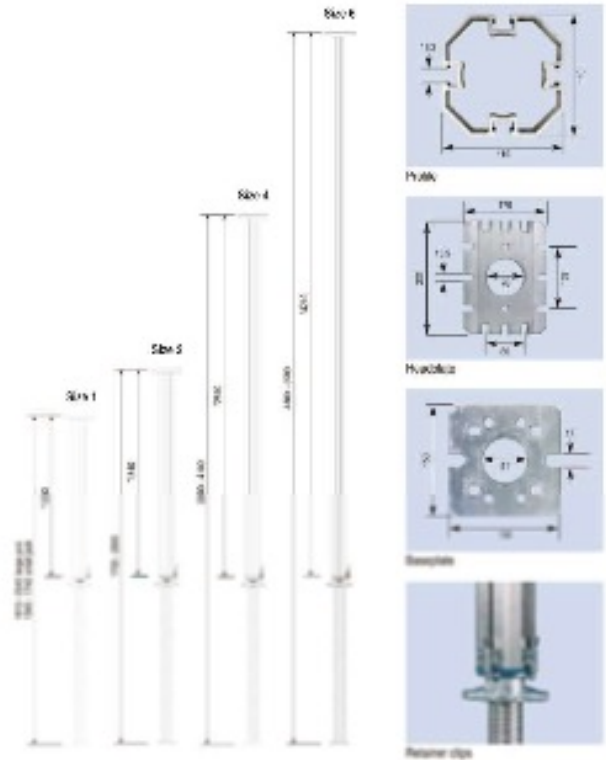
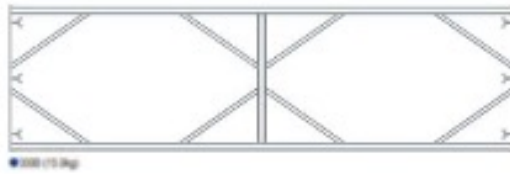
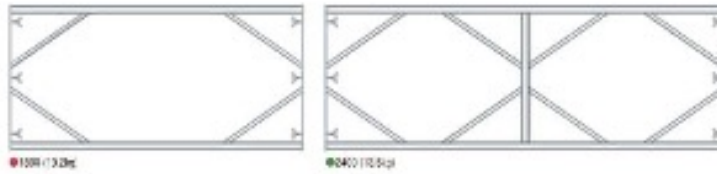
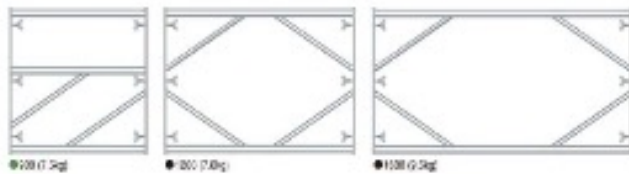
Shoring

Couplers



Shoring and Scaffolding System

Scaffolding



Shoring and Scaffolding System

Scaffolding



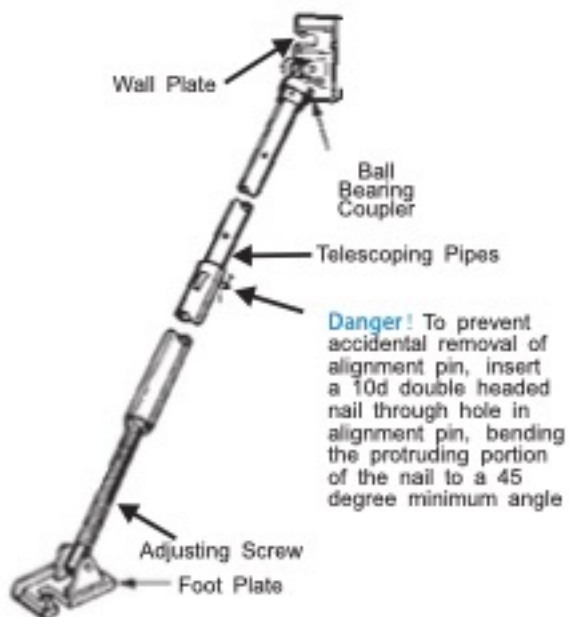
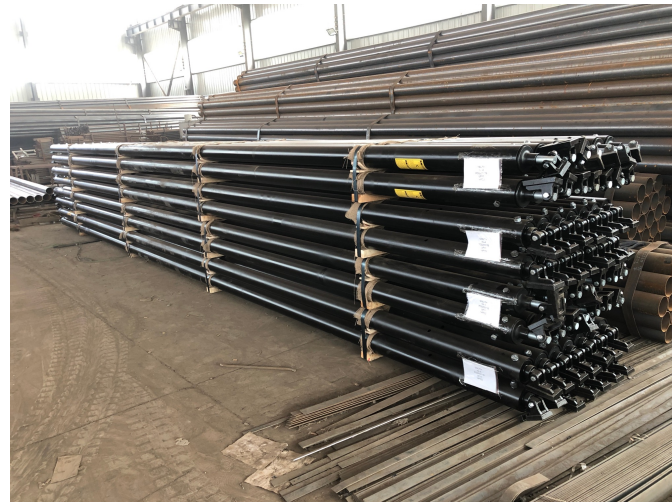
Shoring and Scaffolding System

Scaffolding



Tilt-Up System

Tilt-Up Brace



Precast System

Lifting Clutch



Precast System

Fleet-Lift System

Fleet-Lift System
Components

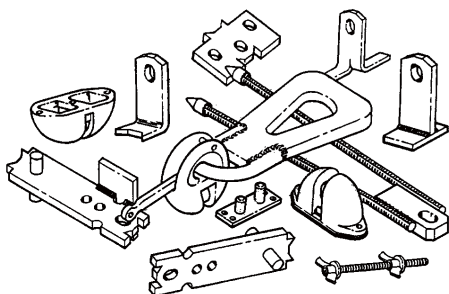


Plate-Lift
Erection
Anchor with
45 degree
Head with
Shear Plate



Reusable
Recess Plug



Ring
Clutch



Plate-Lift Flat
Foot Anchor



Two-Hole
Anchor



New Generation
Forged Foot
Erection Anchor



Erection
Anchor



Spread
Anchor



Superior Lift
System



FEW Fleet Lift
Forged Erection
Anchor with Sheer
Plate



RING Lift
Plate Anchor



Two-Hole
Anchor



Precast System

Lifting System

Utility Anchor Setting Plug



Utility Anchor



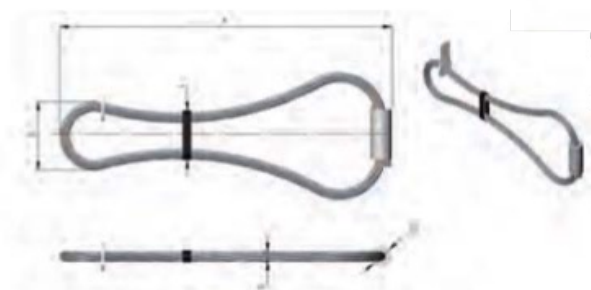
Lifting and Handling Inserts



Flat Washer



Wire Rope Lifting System



Cast Eye Nut and Bolts



Swivel Lifting Plate

Cable Lifting Loop For
Coli Inserts



Single Pickup Insert



Precast System

Lifting and Handling Insert

Coil



Coil
Insert



Expanded Coil
Inserts



Expanded Coil Ferrule
Insert



Flared Thin Slab Coil
Insert⁺



Single Flared Coil Loop
Insert



Precast System Socket System



Precast System



Round Steel Stake

Square Steel Stake

Flat I-Beam Stake

Flat Steel Stake





Universal Systems Group

Mobile: (626) 429-3951

Email: mitchella@universalsystemsgroup.com

Website: www.universalsystemsgroup.com